

THE TROPICAL WILDERNESS

# Travel Guide for Indonesia





# KNOW BEFORE YOU GO

Culture & language

Festivals

Cuisine

Best time

Experience

Souvenirs

Visa

Flight

Travel Tips

# CULTURE & LANGUAGE

With over 17,000 islands scattered around Indonesia, the archipelago is home to the majority of Earth's plant and animal species. Emerald green rice terraces, grand vistas of active volcanoes and the shimmering reefs of the Gili Islands show Indonesia's wide range of biodiversity. With over 300 ethnic groups and 500 different dialects the people are as diverse as their environment.





## CULTURE

---

Indonesia is the world's most populous Muslim country, but the practice of Islam across the archipelago has been shaped by centuries of interaction with Hinduism, Buddhism and other faiths, as well as traditional animist practices. As a result, Indonesian societies are open and remain tolerant towards each other's religions, customs, and traditions, while faithfully adhering to their own. The Indonesian coat of arms moreover bears the motto: *Bhinneka Tunggal Ika*, "Unity in Diversity"

**Selamat tinggal**  
Goodbye

**Permisi**  
Excuse me.

**Apa kabar?**  
How are you?

**Baik, terima kasih.**  
Fine, thanks.

## LANGUAGE

---

Indonesia is the largest bilingual country in the world, with approximately 200 million people speaking more than one language. Indonesian, a dialect of the Malay language, was chosen as the official language of Indonesia. Most of the population speaks Javanese (80million) or another regional dialect, which makes Indonesian their second language.

# FESTIVALS

Being a diverse country of origins and religions, Indonesia has a good mix of cultural events, ceremonies and festivals. Come and experience the Indonesian festivals all year round, as you can see you will never be short of choices.





## BALIEM VALLEY FESTIVAL

---

This Baliem Valley festival is unique only to the Papua people, tracing its roots in the belief that war is not just a conflict but also a symbol of fertility and prosperity. The main event is the mock-war between the local tribes, clad in traditional clothing, and fighting with spears and shields. The vibrant and unique celebration of indigenous culture also offers other attractions of local traditional games, dances, and local cuisine.



## PASOLA

---

During February or March, Pasola will be celebrated in various locations across East Nusa Tenggara. It is one of the most exciting Jousting Festivals, well known around the world, where people on horseback without saddles will throw spears at each other to unseat the opponent. It is a traditional Sumba ritual sport to keep the spirits happy and to bring a good harvest.



## NATIONAL DAY

---

The Indonesians will celebrate their Independence Day on the 17th of August, and this is their biggest national festival. Usually, there will be a grand parade in Jakarta, the capital of Indonesia.



## BALI ARTS FESTIVAL

---

Largest annual celebration of art and culture in Indonesia, with a full month of daily performances, arts exhibitions, dances, food and other cultural offerings.







## NASI GORENG

---

Nasi means rice and goreng means fried. The popular Indonesian dish includes meat, vegetables, spices, shallots, garlic, tamarind and chili. Typically, it's served with sweet soy sauce, seasoning and crackers.



## NASI CAMPUR

---

Nasi campur, which translates to mixed rice, is one of the most popular Indonesian dishes. It consists of rice served with a variety of side dishes. The side dishes change on a daily basis and differ from region to region. It can be found across the country, traditionally enjoyed as the main course.



## CHICKEN SATAY

---

Chicken satay barbecued in the streets is a quick, cheap and very tasty Indonesian treat. The most famous Indonesian chicken satay, Sate Madura, is wrapped with rice, peanut sauce and condiments in banana leaves.s.



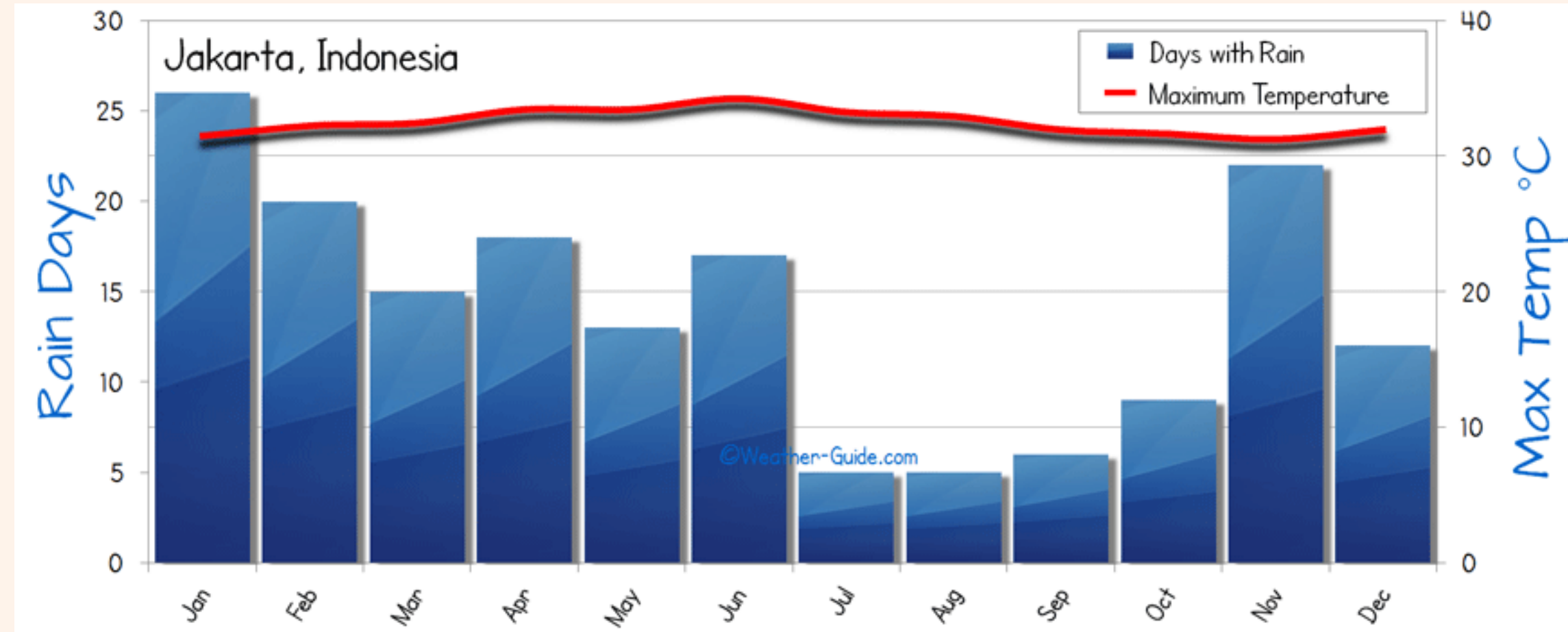
## SNAKE FRUIT

---

Snake fruit, more technically known as salak, is native to Indonesia but is now grown and produced around southeast Asia. The fruit grows on the salak palm tree, sprouting off the base of the palm in little clusters. Although it does not look very appealing, the taste is quite good. You should try this strange fruit when you visit Indonesia.

# BEST TIME

The Indonesian archipelago is tropical, with temperatures ranging between 21°C and 33°C. In theory, the best time to travel to Indonesia is dictated by the dry season. The wet months are mostly from November to April and the dry months are from May through to October.

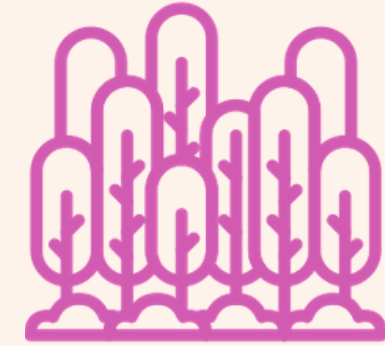


# EXPERIENCE

Indonesia is a paradise with new adventures awaiting everyday. The country's ethnic, cultural and natural diversity is astonishing and offers endless opportunities. Go island hopping and discover rare animals, flawless landscapes and a diverse culture.



Culture



Nature



Religion



Beach

# First Time Visitor



## BALI

Bali is one of the most popular travel destinations in the world, and with good reason, as this island which is known as the 'Island of the Gods' is one of the most beautiful places on earth. Surf on perfect waves at the famous Kuta Beach or visit the undisputed cultural capital, Ubud, surrounded by emerald green rice terraces. Doesn't matter how young or old you are, Bali's impressive array of activities won't disappointed you.

# Landscape



## LOMBOK ISLAND

Unspoiled beaches, friendly people and fantastic nature are three of the reasons to prefer Lombok over crowded Bali. Some of the highlights of this island include the best snorkeling and diving opportunities in whole Indonesia. The active volcano, Mount Rinjani, offers stunning views and great hiking trails through the jungle and around the turquoise crater lakes. Cool off in the pool at the base of Tiu Kelep Waterfall.



## JAKARTA

Jakarta is a huge, sprawling metropolis, home to almost 30 million people with diverse ethnic group backgrounds from all over Indonesia. It is no wonder, that you will find Jakarta as a dynamic city, with activities taking place around-the-clock throughout its populated areas. Though many travelers don't give the capital a second glance, it's definitely worth a one-day exploration.

# Landscape



## GILI ISLANDS

Just off shore, the famous Gili Islands are ringed by glorious white beaches and pristine coral reefs. Discover the colorful underwater world of the Gilis by snorkeling or scuba diving. With a little bit of luck, you can even spot turtles. The main island, Gili Trawangan, best fits the image of a party island, tiny Gili Meno is a honeymooners' favorite, and Gili Air is the perfect destination for families.



## NUSA LEMBONGAN

This island is a treasure for everybody who loves a relaxed atmosphere dreamy white beaches with crystal clear water. Enjoy a long stroll on the long Jungut Batu Beach during sunset and book activities for the next day. Join a Mangrove tour, snorkel with giant Manta Rays or explore the Devil's Tears. Sounds exciting?



## NUSA PENIDA

Nusa Penida is the biggest of the three Nusa Islands just off from mainland Bali. Stunning white sand beaches, like Atuh Beach, are surrounded by huge cliffs and remarkable rock formations. This island offers caves with underground temples, hikes to magnificent waterfalls and spectacular coastal cliff views shaped like a Tyrannosaurus Rex. Less people, more adventure!

# SOUVENIRS

We all want our travel memories to remain fresh forever. But if only memories were left alone. It is human nature to possess material belonging as a reminder of their cherished memories. Whether you splurge on your travels, buy a cheap souvenir, pick a free memento or just take lots of photos, there is always something to look back to after your return.

Wayang



Batik



Wood carvings



Indonesian coffee

# VISA

As of 2016, citizens from 169 countries, including all of Europe as well as Australia, New Zealand, Canada and the US, can enter Indonesia visa-free at any official immigration gateways and stay for thirty days. However, travel requirements for Indonesia are notoriously prone to change, so it's worth checking before you travel.





# DIRECT FLIGHT

## To Bali

From	Schedule	Airline	Flying Time	Operation
Hongkong	19:30 - 00:30	HX709	5h	Daily
	15:45 - 20:45	GA857	5h	Daily
Shanghai	18:00 - 00:30	MU5029	6h30min	Daily
Guangzhou	18:15 - 23:30	CZ625	5h15min	Daily
	02:15 - 07:40	CZ625	5h25min	Daily



## To Jakarta



From	Schedule	Airline	Flying Time	Operation
Hongkong	09:00 - 13:00	GA873	5h	Daily
	15:45 - 19:35	CX719	4h50min	Daily
Shanghai	17:20 - 22:30	MU5069	6h10min	Daily
Guangzhou	08:30 - 12:15	CZ3037	4h45min	Daily
	18:40 - 22:30	CZ387	4h50min	Daily

# TRAVEL TIPS

## Dos & Don'ts for Traveling in Bali

DO



Dress modestly



Exchange money at banks or ATMs



Use Blue Bird Taxis



Only use authorized money exchange companies



DON'T



Forget to wear sunscreen



Use unmarked cars



Swim in red flag zones



Drink tap water





- Women should dress conservatively. Avoid tight fitting clothes.
- Remember it is hot, so cotton or at least light clothing is best.
- Food is often taken from a shared dish in the middle. Its not considered rude if you serve yourself.
- Bear in mind delays are common to all forms of transport, caused by weather, mechanical failure, or simply not enough passengers turning up.
- Be aware of pickpockets on ferries, buses or other large gatherings
- Get good insurance! If you get seriously ill, you will probably need to travel to Singapore for treatment and the cost of this is extremely high.
- Avoid getting sick by observing how your food is prepared/cooked.
- NEVER drink cheap alcohol! Ist probably fake. Not properly distilled alcohol contains methanol, and small amounts can kill you. Drink bottled alcohol, Wine or Beer.
- Drink bottled water. It's not recommended to drink from the tap in Indonesia.
- Blue Bird taxis are the safest and most recommended taxi company to use in Indonesia
- Prepare for squat toilets and don't forget the tissues.



# Explore the colours of life!



 Elitzen Business Center, 9/F, 1728 West Nanjing Road, Jing'an District Shanghai China

 +86 021 6054 7788 / +86 187 2197 8867

 [info@expatsholidays.com](mailto:info@expatsholidays.com)

 [www.expats-holidays.com](http://www.expats-holidays.com)



24 x 7 Support



Unforgettable Memories



Efficient Team



Best Price



Secure Services



Time Saving

An aerial photograph of a tropical coastline. In the foreground, there's a white sandy beach curving along the shore. The water is a vibrant turquoise color, transitioning to a deeper blue further out. The land is covered in lush green vegetation. On the left, there are two large, rounded rock formations jutting out into the sea. The overall scene is bright and scenic.

**MANY THANKS!**

All we care about is you.